

! Contact our sales office for delivery dates and prices as this is a special model.

Specialized Product **P.G.** Point to Group information

# Fixed Throttle Inner Sleeve

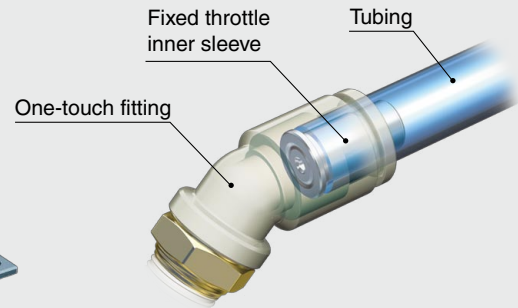
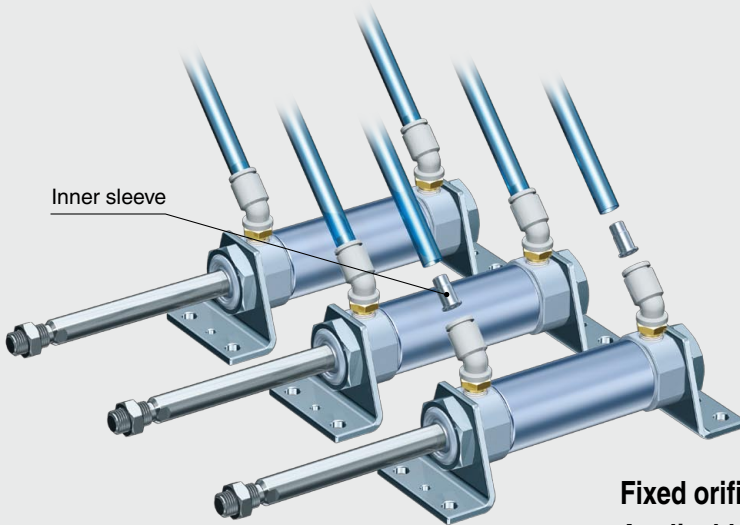
## TJ-□-X149-□ (SUS303)/TJ□-□-X107 (Brass)

### Features

**Flow rate control not required!**

Multiple cylinders can be set to fixed flow rates (cylinder speed control, etc.).

Fixed orifice ID printing  
Example) For G: 0.7 mm



Fixed orifice: 6 size (SUS303) 8 size (Brass)  
Applicable to secondary battery industry (Copper free/SUS303)

### How to Order

**SUS303** TJ-0425-X149-0.7

**Brass** TJ 0425-7-X107

#### Tubing model

0425	Tubing O.D. 4 mm Tubing I.D. 2.5 mm
0604	Tubing O.D. 6 mm Tubing I.D. 4 mm

#### Fixed orifice

3	0.3±0.02 mm
4	0.4±0.02 mm
5	0.5±0.02 mm
6	0.6±0.02 mm
7	0.7±0.02 mm
8	0.8±0.02 mm
9	0.9±0.02 mm
10	1.0±0.02 mm

#### Fixed orifice

0.2	0.2±0.02 mm
0.5	0.5±0.02 mm
0.7	0.7±0.02 mm
0.9	0.9±0.02 mm
1.1	1.1±0.02 mm
1.3	1.3±0.02 mm

### Specifications

Applicable tubing material	Polyurethane
Fluid	Air
Maximum operating pressure	1.0 MPa (Note)
Ambient and fluid temperature	-5 to 60°C (No freezing)

Note) Confirm the operating pressure range and operating temperature range of the polyurethane tubing.

Tubing model	Material	Fixed orifice										
		0.2	0.3	0.4	0.5	0.6	0.7	0.8	0.9	1.0	1.1	1.3
TJ-0425-X149-□	SUS303	●	—	—	●	—	●	—	●	—	●	—
TJ-0604-X149-□		—	—	—	●	—	●	—	●	—	●	—
TJ0425-□-X107	Brass	—	●	●	●	●	—	—	—	●	—	—
TJ0604-□-X107		—	—	●	●	—	●	●	●	—	—	—



### Caution

To ensure the safest possible operation of this product, please be sure to thoroughly read the "Safety Instructions" in our "Best Pneumatics" catalog before use.

SMC Corporation 4-14-1, SOTO-KANDA, CHIYODA-KU, TOKYO 101-0021, JAPAN URL: <http://www.smcworld.com>

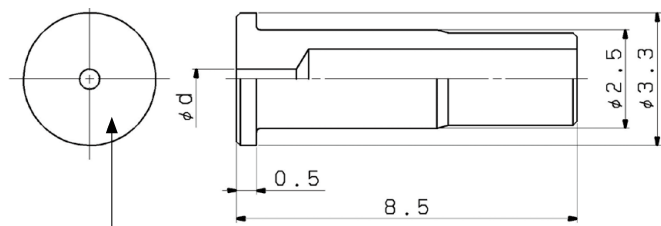
©2016 SMC Corporation All Rights Reserved



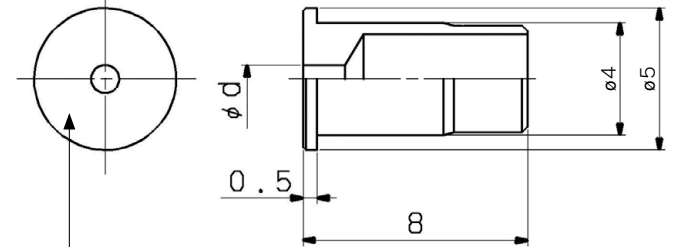
SP153X-012E  
P: UQ

## Dimensions

### TJ-0425-X149-□/TJ0425-□-X107



### TJ-0604-X149-□/TJ0604-□-X107



A letter is marked to identify the fixed throttle size

$\phi d$	Letter			
	TJ-0425-X149-□	TJ-0604-X149-□	TJ0425-□-X107	TJ0604-□-X107
0.2±0.02	B	—	—	—
0.3±0.02	—	—	C	—
0.4±0.02	—	—	D	D
0.5±0.02	E	E	E	E
0.6±0.02	—	—	F	—
0.7±0.02	G	G	G	G
0.8±0.02	—	—	—	H
0.9±0.02	I	I	—	I
1.0±0.02	—	—	J	J
1.1±0.02	K	K	—	—
1.3±0.02	—	M	—	—

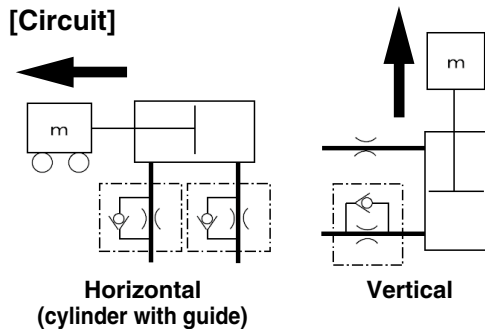


Fixed orifice ID printing

**Referential data on fixed throttle size** (The values below are not guaranteed. Please make sure that the performance of the product satisfies your requirements under the actual conditions of use.)

When used with a CQ2 compact cylinder and AS fixed throttle speed controller.

### [Circuit]



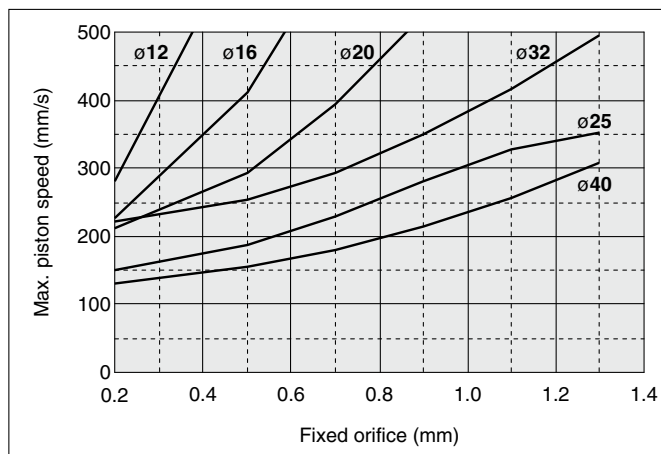
### [Detailed conditions]

Cylinder bore size	$\phi 12$	$\phi 16$	$\phi 20$	$\phi 25$	$\phi 32$	$\phi 40$
Cylinder stroke [mm]	30			50		
Load mass m [kg]	Horizontal	1.6	3	5	8	12
	Vertical	0.8	1.5	2.5	4	6
Fixed throttle speed controller	AS1201F-M5-04-□-X250			AS2201F-01-06-□-X250		
Tubing (Length)	TU0425 (1.0 m)			TU0604 (1.0 m)		
Solenoid valve	SY3120			SY5120		
Operating pressure [MPa]	0.5					

**[Fixed throttle size and max. piston speed]** (Please refer to the "Best Pneumatics" catalog for the allowable kinetic energy.)

\* The positions of the  $\phi 25$  and  $\phi 32$  lines are switched since the operating conditions (the fixed throttle speed controller, tubing and the valve) are different.

### Horizontal



### Vertical

