



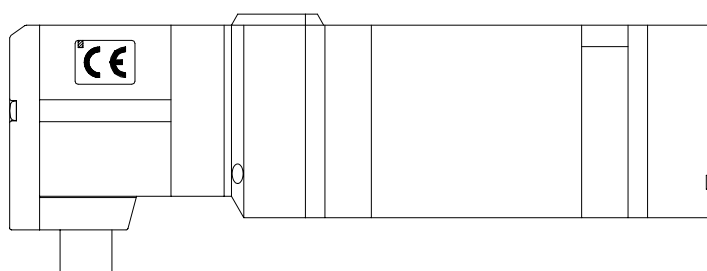
SV3000 Dual 3port solenoid valve

SV3*00-5FU-X2

SMC CORPORATION
1-16-4 Shimbashi, Minato-ku
Tokyo 105-0004, JAPAN
URL: <http://www.smcworld.com>

Feature 1: 4position

Feature 2: CE Marking (EMC Directive compliant)



Specifications

Fluid	Air
Operating pressure range	0.15 to 0.7MPa
Ambient and fluid temperature	-10 to 50 (No freezing)
Coil rated voltage	24 VDC
Allowable voltage fluctuation	± 10% of rated voltage
Power consumption	With indicator light:0.65W
Surge voltage suppressor	Zener diode
Manual override	Non-locking push type
Lubrication	Not required
Mounting orientation	Unrestricted
Impact/Vibration resistance	150/30 ms ²
Enclosure	IP67 (Based on IEC529)

Flow characteristics

	C [dm ³ /(s·bar)]	b	Cv
1 4/2 (P A/B)	4.0	0.37	1.0
4/2 3/5 (A/B E)	3.8	0.36	1.0

Life 10mil. cycles

How to Order

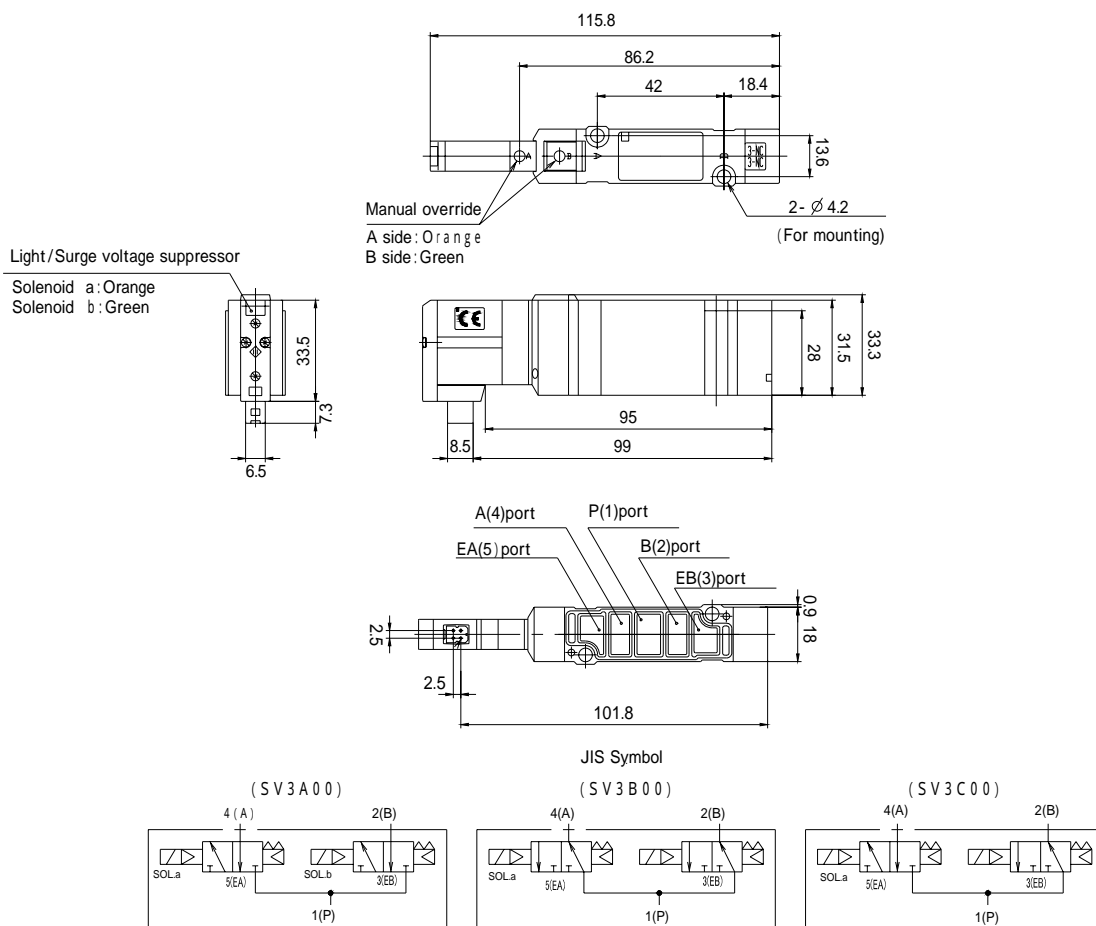
SV3 A 00-5FU-X2

Type of actuation

A	Dual 3 port valve : N.C. / N.C.
B	Dual 3 port valve : N.O. / N.O.
C	Dual 3 port valve : N.C. / N.O.

Please refer to Best Pneumatics for manifold model number.

Dimensions: (mm)



Caution: To ensure the safest possible operation of this product, please be sure to read thoroughly the "Safety Instructions" in our "Best Pneumatics" general catalog before use.