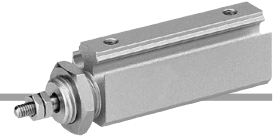


# Pin Cylinder: Double Acting, Single Rod

## 25A-CJP2 Series

∅4, ∅6, ∅10, ∅16



### How to Order

**25A - CDJP2 F 10 - 15 D - [ ] - M9BW S**

Series compatible with secondary batteries

With auto switch (Built-in magnet)

Mounting

Symbol	Mounting	Standard	Built-in magnet
B	Basic	●	●
F	Flange	●	●
L	Foot	●	●
D	Clevis	●	●
T	Trunnion	●	●

- \* Bore size of 4 mm is available with basic mounting only.
- \* Mounting bracket is shipped together (but not assembled).
- \* Trunnion mounting type is shipped after assembled.

Bore size

4	4 mm
6	6 mm
10	10 mm
16	16 mm

Number of auto switches

Nil	2 pcs.
S	1 pc.

Auto switch

Nil	Without auto switch
-----	---------------------

\* Refer to page 205 for the applicable auto switch model.

Rod end thread

Nil	With thread
B	Without thread

Double acting

Cylinder standard stroke

Bore size [mm]	Stroke [mm]
4	5, 10, 15, 20*1
6	5, 10, 15, 20, 25
10, 16	5, 10, 15, 20, 25, 30, 35, 40

\*1 20 stroke of bore size 4 mm is standard type only.

### Built-in Magnet Cylinder Model

If a built-in magnet cylinder without an auto switch is required, there is no need to enter the symbol for the auto switch.  
(Example) 25A-CDJP2F10-15D

\* The 25A- series specifications and dimensions are the same as those of the standard model.

### Mounting Bracket Part Nos. for the 25A- Series

Bore size [mm]	Flange	Foot	Trunnion
6	25A-CP-F006A	25A-CP-L006A	25A-CP-T006A
10	25A-CP-F010A	25A-CP-L010A	25A-CP-T010A
16	25A-CP-F016A	25A-CP-L016A	25A-CP-T016A

### Accessory Bracket Part Nos. for the 25A- Series

Bore size [mm]	Single knuckle joint	Double knuckle joint	Knuckle joint pin	Trunnion pin	Mounting nut	Rod end nut
4	—	—	—	—	25A-SNPS-004	25A-NTJ-004
6	25A-I-P006A	25A-Y-P006A	25A-IY-P006	25A-CT-P006	25A-SNP-006	25A-NTP-006
10	25A-I-P010A	25A-Y-P010A	25A-IY-P010	25A-CT-P010	25A-SNP-010	25A-NTP-010
16	25A-I-P016A	25A-Y-P016A	25A-IY-P016	25A-CT-P016	25A-SNP-016	25A-NTP-016

[Click here for details.](#)

# Air Cylinder: Standard Type Double Acting, Single Rod

## 25A-CJ2 Series

ø10, ø16



### How to Order

**25A-C** **D** **J2** **L** **16** - **60** **A** **Z** - **M9BW** **B**

Series compatible with secondary batteries

#### With auto switch

Nil	Without magnet for switch*1
D	With auto switch (Built-in magnet)

\*1 In the case of without magnet for switch, auto switch cannot be mounted.

#### Mounting

B	Basic
E	Double-side bossed
D	Double clevis
L	Single foot
M	Double foot
F	Rod flange
G	Head flange

\* Mounting bracket is shipped together with the product, but not assembled.

#### Bore size

10	10 mm
16	16 mm

#### Cylinder standard stroke [mm]

10	15, 30, 45, 60, 75, 100, 125, 150
16	15, 30, 45, 60, 75, 100, 125, 150, 175, 200

\* Manufacture of intermediate strokes in 1 mm increments is possible. (Spacers are not used.)

#### Auto switch mounting type

B	Band mounting
---	---------------

\* Refer to [page 212](#) for auto switch mounting brackets.

#### Number of auto switches



Nil	2
S	1
n	n

#### Auto switch

Nil	Without auto switch
-----	---------------------

\* Refer to [page 205](#) for the applicable auto switch model.  
\* Enter the auto switch mounting type (B) even when a built-in magnet cylinder without an auto switch is required.

#### Head cover port location

Bore size [mm]	ø10, ø16	
Symbol		
Nil	Perpendicular to axis	
R	Axial	

\* Double clevis is only available for being perpendicular to axis.

\* Double-side bossed type is only available for being perpendicular to axis.

#### Cushion

Nil	Rubber bumper
A	Air cushion

#### Mounting Bracket Part Nos. for the 25A- Series

Mounting bracket	Bore size [mm]	
	10	16
Foot bracket	25A-CJ-L010B	CJ-L016SUS
Flange bracket	25A-CJ-F010B	CJ-F016SUS

\* The 25A- series specifications and dimensions are the same as those of the standard model.

[Click here for details.](#)

# Air Cylinder: Non-rotating Rod Type Double Acting, Single Rod

## 25A-CJ2K Series

ø10, ø16



### How to Order

**25A-C** **D** **J2K** **L** **16** - **60** **Z** - **M9BW** **B**

Series compatible with secondary batteries

#### With auto switch

Nil	Without magnet for switch*1
D	With auto switch (Built-in magnet)

\*1 In the case of without magnet for switch, auto switch cannot be mounted.

#### Mounting

B	Basic
E	Double-side bossed
D	Double clevis
L	Single foot
M	Double foot
F	Rod flange
G	Head flange

\* Mounting bracket is shipped together with the product, but not assembled.

#### Bore size

10	10 mm
16	16 mm

#### Cylinder standard stroke [mm]

10	15, 30, 45, 60, 75, 100, 125, 150
16	15, 30, 45, 60, 75, 100, 125, 150, 175, 200

\* Manufacture of intermediate strokes in 1 mm increments is possible. (Spacers are not used.)

#### Auto switch mounting type

**B** Band mounting

\* Refer to page 212 for auto switch mounting brackets.

#### Number of auto switches

Nil	2
S	1
n	n



#### Auto switch

**Nil** Without auto switch

\* Refer to page 205 for the applicable auto switch model.

\* Enter the auto switch mounting type (B) even when a built-in magnet cylinder without an auto switch is required.

#### Head cover port location

Bore size [mm]	ø10, ø16	
Symbol	Nil	Perpendicular to axis 
	R	Axial 

\* Double clevis is only available for being perpendicular to axis.

\* Double-side bossed type is only available for being perpendicular to axis.

#### Mounting Bracket Part Nos. for the 25A- Series

Mounting bracket	Bore size [mm]	
	10	16
Foot bracket	CJ-L016SUS	CJK-L016SUS
Flange bracket	CJ-F016SUS	CJK-F016SUS

\* The 25A- series specifications and dimensions are the same as those of the standard model. (Excluding the foot and flange plate thickness)

[Click here for details.](#)



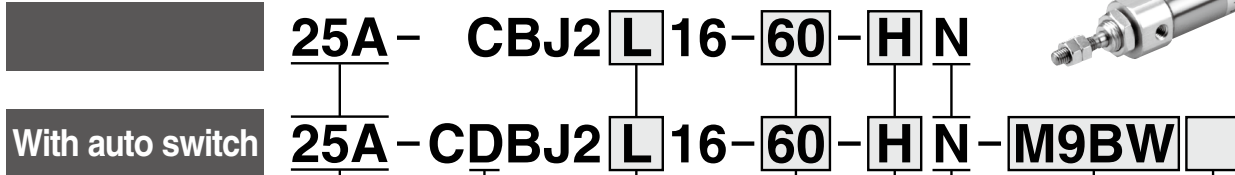
# Air Cylinder: With End Lock

# 25A-CBJ2 Series

## Ø16



### How to Order



Series compatible with secondary batteries

With auto switch (Built-in magnet)

#### Mounting

<b>B</b>	Basic
<b>L</b>	Axial foot
<b>F</b>	Rod flange
<b>D</b>	Double clevis*1

\*1 Rod end lock only  
 \* Foot/Flange brackets are shipped together with the product, but not assembled.

#### Cylinder standard stroke [mm]

Bore size	Standard stroke
<b>16</b>	15, 30, 45, 60, 75, 100, 125, 150, 175, 200

\* Manufacture of intermediate strokes in 1 mm increments is possible. (Spacers are not used.)

#### Lock position

<b>H</b>	Head end lock
<b>R</b>	Rod end lock

#### Manual release

<b>N</b>	Non-locking type
----------	------------------

#### Auto switch

<b>Nil</b>	Without auto switch
------------	---------------------

\* For applicable auto switches, refer to page 205.

#### Number of auto switches

<b>Nil</b>	2
<b>S</b>	1
<b>n</b>	n

### How to order built-in magnet type (Without auto switch)

Suffix the symbol "B" (Band mounting) to the end of part number for cylinder with auto switch.

Example	25A-CDBJ2B16-60-HN-B
---------	----------------------

### Mounting Bracket Part Nos. for the 25A- Series

Mounting bracket	Bore size [mm]
	<b>16</b>
Foot bracket	CJ-L016SUS
Flange bracket	CJ-F016SUS

\* The 25A- series specifications and dimensions are the same as those of the standard model. [Click here for details.](#)

# Air Cylinder: Standard Type Double Acting, Single Rod

## 25A-CM2 Series

∅20, ∅25, ∅32, ∅40



### How to Order

**25A - C D M2 L 40 - 150 A Z - M9BW**

Series compatible with secondary batteries

With auto switch

Nil	Without magnet for switch*1
D	With auto switch (Built-in magnet)

\*1 In the case of without magnet for switch, auto switch cannot be mounted.

Mounting

B	Basic
L	Axial foot
F	Rod flange
G	Head flange
C	Single clevis
D	Double clevis
U	Rod trunnion
T	Head trunnion
E	Integrated clevis
V	Integrated clevis (90°)
BZ	Boss-cut/Basic
FZ	Boss-cut/Rod flange
UZ	Boss-cut/Rod trunnion

### Built-in Magnet Cylinder Model

If a built-in magnet cylinder without an auto switch is required, there is no need to enter the symbol for the auto switch.  
(Example) 25A-CDM2F32-100AZ

Bore size

20	20 mm
25	25 mm
32	32 mm
40	40 mm

Number of auto switches

Nil	2
S	1
n	n

Auto switch

Nil	Without auto switch
-----	---------------------

\* Refer to page 205 for the applicable auto switch model.

Rod end thread

Nil	Male rod end
F	Female rod end

Cushion

Nil	Rubber bumper
A	Air cushion

Cylinder Stroke [mm]

Bore size	Standard stroke*1	Maximum stroke
20	25, 50, 75, 100, 125, 150 200, 250, 300	1000
25		1500
32		2000
40		2000

\*1 Other intermediate strokes can be manufactured upon receipt of order. Manufacture of intermediate strokes in 1 mm increments is possible. (Spacers are not used.)

\* When exceeding 300 strokes, the allowable maximum stroke length is determined by the stroke selection table (**Web Catalog** or **Best Pneumatics**).

\* The 25A- series specifications and dimensions are the same as those of the standard model.

[Click here for details.](#)

### Mounting Bracket Part Nos. for the 25A- Series

Mounting bracket	Min. order	Bore size [mm]				Description (for min. order)
		20	25	32	40	
Axial foot*1	2	CM-L020B-XB12	CM-L032B-XB12	CM-L040B-XB12		2 feet, 1 mounting nut
Flange	1	CM-F020BSUS	CM-F032BSUS	CM-F040BSUS		1 flange
Single clevis*2	1	CM-C020B	CM-C032B	CM-C040B		1 single clevis, 3 liners
Double clevis*2*3 (with pin)	1	25A-CM-D020B	25A-CM-D032B	25A-CM-D040B		1 double clevis, 3 liners, 1 clevis pin, 2 retaining rings
Trunnion (with nut)	1	25-CM-T020B	25-CM-T032B	25-CM-T040B		1 trunnion, 1 trunnion nut

\*1 Order 2 foot brackets for each cylinder unit.

\*2 3 liners are attached with a clevis bracket for adjusting the mounting angle.

\*3 A clevis pin and retaining rings (split pins for ∅40) are attached.

# Air Cylinder: Standard Type Double Acting, Single Rod

## 25A-CG1 Series

∅20, ∅25, ∅32, ∅40, ∅50, ∅63, ∅80, ∅100



### How to Order

**25A-C D G1 L N 25-100 Z-M9BW**

Series compatible with secondary batteries

With auto switch

Nil	Without magnet for switch*1
D	With auto switch (Built-in magnet)

\*1 In the case of without magnet for switch, auto switch cannot be mounted.

Mounting

B	Basic
Z*1	Basic (without trunnion mounting female thread)
L	Axial foot
F	Rod flange
G	Head flange
U*1	Rod trunnion
T*1	Head trunnion
D	Clevis

\*1 Not available for ∅80 or ∅100.  
\* Mounting bracket is shipped together with the product, but not assembled.  
\* The cylinder for F, G, L, D mounting types is Z: Basic (without trunnion mounting female thread).

Type

N	Rubber bumper
A	Air cushion

Bore size

20	20 mm
25	25 mm
32	32 mm
40	40 mm
50	50 mm
63	63 mm
80	80 mm
100	100 mm

### Built-in Magnet Cylinder Model

If a built-in magnet cylinder without an auto switch is required, there is no need to enter the symbol for the auto switch.  
(Example) 25A-CDG1FN32-100Z

Number of auto switches

Nil	2
S	1
n	n

Auto switch

Nil	Without auto switch
-----	---------------------

\* Refer to page 205 for the applicable auto switch model.

Rod end thread

Nil	Rod end male thread
F	Rod end female thread

Cylinder stroke [mm]

Bore size [mm]	Standard stroke*1 [mm]	Long stroke*2 [mm]
20	25, 50, 75, 100, 125, 150, 200	201 to 1500
25	25, 50, 75, 100, 125, 150, 200, 250, 300	301 to 1500
32		
40		
50, 63		
80		
100		

\*1 Other intermediate strokes can be manufactured upon receipt of order. Manufacture of intermediate strokes in 1 mm increments is possible. (Spacers are not used.)

\*2 The long stroke shows the maximum manufacturable stroke. For details about maximum stroke that can be used for each mounting bracket, refer to the stroke selection table (Web Catalog or Best Pneumatics).

\* The 25A- series specifications and dimensions are the same as those of the standard model.

[Click here for details.](#)

### Mounting Bracket Part Nos. for the 25A- Series

Mounting bracket	Min. order	Bore size [mm]								Description
		20	25	32	40	50	63	80	100	
Foot	2*1	90-CG-L020	90-CG-L025	90-CG-L032	90-CG-L040	90-CG-L050	25-CG-L063	25-CG-L080	25-CG-L100	Foot x 2, Mounting bolt x 8
Flange	1	90-CG-F020	90-CG-F025	90-CG-F032	90-CG-F040	90-CG-F050	25-CG-F063	25-CG-F080	25-CG-F100	Flange x 1, Mounting bolt x 4
Trunnion pin	1	25-CG-T020	25-CG-T025	25-CG-T032	25-CG-T040	25-CG-T050	25-CG-T063	—	—	Trunnion pin x 2, Trunnion bolt x 2, Flat washer x 2
Clevis	1	25-CG-D020	25-CG-D025	25-CG-D032	25-CG-D040	25-CG-D050	25-CG-D063	25-CG-D080	25-CG-D100	Clevis x 1, Mounting bolt x 4, Clevis pin x 1, Retaining ring x 2
Pivot bracket	1	25-CG-020-24A	25-CG-025-24A	25-CG-032-24A	25-CG-040-24A	25-CG-050-24A	25-CG-063-24A	25-CG-080-24A	25-CG-100-24A	Pivot bracket x 1

\*1 Order two foot brackets per cylinder.

# Air Cylinder: With End Lock

# 25A-CBG1 Series

∅20, ∅25, ∅32, ∅40, ∅50, ∅63

## How to Order



**25A - CBG1 L N 25 - 100 - H N**

**25A - CDBG1 L N 25 - 100 - H N - M9BW**

Series compatible with secondary batteries

With auto switch (Built-in magnet)

### Mounting

B	Basic
L	Axial foot
F	Rod flange
G	Head flange
U	Rod trunnion
T	Head trunnion
D	Clevis

\* Mounting brackets are shipped together, but not assembled.

### Type

N	Rubber bumper
---	---------------

### Bore size

20	20 mm
25	25 mm
32	32 mm
40	40 mm
50	50 mm
63	63 mm

### Cylinder stroke [mm]

Bore size	Standard stroke*1	Long stroke*2
20	25, 50, 75, 100, 125, 150, 200	201 to 1500
25	25, 50, 75, 100, 125, 150, 200, 250, 300	301 to 1500
32		
40		
50, 63		

\*1 Other intermediate strokes can be manufactured upon receipt of order. Manufacture of intermediate strokes in 1 mm increments is possible. (Spacers are not used.)

\*2 The long stroke shows the maximum manufacturable stroke. For details about maximum stroke that can be used for each mounting bracket, refer to the stroke selection table (Web Catalog or Best Pneumatics).

### Number of auto switches

Nil	2
S	1
n	n

### Auto switch

Nil	Without auto switch
-----	---------------------

\* For applicable auto switches, refer to page 205.

### Manual release

N	Non-locking type
---	------------------

### Lock position

H	Head end lock
R	Rod end lock
W	Double end lock

## Built-in Magnet Cylinder Model

If a built-in magnet cylinder without an auto switch is required, there is no need to enter the symbol for the auto switch.

(Example) 25A-CDBG1FN32-100-RN

## Mounting Bracket Part Nos. for the 25A- Series

Mounting bracket	Min. order	Bore size [mm]						Description
		20	25	32	40	50	63	
Foot	2*1	90-CG-L020	90-CG-L025	90-CG-L032	90-CG-L040	90-CG-L050	25-CG-L063	Foot x 2, Mounting bolt x 8
Flange	1	90-CG-F020	90-CG-F025	90-CG-F032	90-CG-F040	90-CG-F050	25-CG-F063	Flange x 1, Mounting bolt x 4
Trunnion pin	1	25-CG-T020	25-CG-T025	25-CG-T032	25-CG-T040	25-CG-T050	25-CG-T063	Trunnion pin x 2, Trunnion bolt x 2, Flat washer x 2
Clevis	1	25-CG-D020	25-CG-D025	25-CG-D032	25-CG-D040	25-CG-D050	25-CG-D063	Clevis x 1, Mounting bolt x 4, Clevis pin x 1, Retaining ring x 2
Pivot bracket	1	25-CG-020-24A	25-CG-025-24A	25-CG-032-24A	25-CG-040-24A	25-CG-050-24A	25-CG-063-24A	Pivot bracket x 1

\*1 Order two foot brackets per cylinder.

\* The 25A- series specifications and dimensions are the same as those of the standard model.

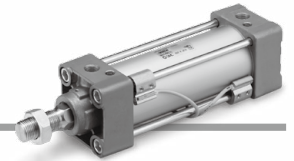
[Click here for details.](#)



# Air Cylinder: Single Rod

# 25A-MB Series

∅32, ∅40, ∅50, ∅63, ∅80, ∅100



## How to Order

**25A-M D B L 32-50 Z-M9BW**

Series compatible with secondary batteries

With auto switch

Nil	Without magnet for switch*1
D	With auto switch (Built-in magnet)

\*1 In the case of without magnet for switch, auto switch cannot be mounted.

Mounting

B	Basic
L	Axial foot
F	Rod flange
G	Head flange
C	Single clevis
D	Double clevis
T	Center trunnion

Bore size

32	32 mm
40	40 mm
50	50 mm
63	63 mm
80	80 mm
100	100 mm

Number of auto switches

Nil	2
S	1
3	3
n	n

Auto switch

Nil	Without auto switch
-----	---------------------

\* Refer to page 205 for the applicable auto switch model.

Cylinder stroke [mm]

Bore [mm]	Standard stroke [mm]
32	25, 50, 75, 100, 125, 150, 175, 200, 250, 300, 350, 400, 450, 500
40	25, 50, 75, 100, 125, 150, 175, 200, 250, 300, 350, 400, 450, 500
50	25, 50, 75, 100, 125, 150, 175, 200, 250, 300, 350, 400, 450, 500, 600
63	25, 50, 75, 100, 125, 150, 175, 200, 250, 300, 350, 400, 450, 500, 600
80	25, 50, 75, 100, 125, 150, 175, 200, 250, 300, 350, 400, 450, 500, 600, 700, 800
100	25, 50, 75, 100, 125, 150, 175, 200, 250, 300, 350, 400, 450, 500, 600, 700, 800

\* Intermediate strokes are available. (No spacer is used.)

### Built-in Magnet Cylinder Model

If a built-in magnet cylinder without an auto switch is required, there is no need to enter the symbol for the auto switch.

(Example) 25A-MDBB40-100Z

\* The 25A- series specifications and dimensions are the same as those of the standard model.

[Click here for details.](#)

### Mounting Bracket Part Nos. for the 25A- Series

Bore size [mm]	32	40	50	63	80	100
Foot*1	25A-MB-L03	25A-MB-L04	25A-MB-L05	25A-MB-L06	25A-MB-L08	25A-MB-L10
Flange	MB-F03-XC7	MB-F04-XC7	MB-F05-XC7	MB-F06-XC7	MB-F08-XC7	MB-F10-XC7
Single clevis	25-MB-C03	25-MB-C04	25-MB-C05	25-MB-C06	25-MB-C08	25-MB-C10
Double clevis	25-MB-D03	25-MB-D04	25-MB-D05	25-MB-D06	25-MB-D08	25-MB-D10

\*1 Two foot brackets required for one cylinder.

\* Accessories for each mounting bracket are as follows: Foot, flange, single clevis/body mounting bolt, double clevis/body mounting bolt, clevis pin, flat washers and split pins.

Directional Control Valves

Air Cylinders

Related Products

Rotary Actuators

Air Grippers

Vacuum Equipment

Air Preparation Equipment

Clean Air Filters

Modular F.R.L. Pressure Control Equipment

Fittings/Flow Control Equipment

Detection Switches

Fluid Control Equipment

Electric Actuators

Auto Switches

# Air Cylinder: Standard Type Double Acting, Single Rod

## 25A-CA2 Series

∅40, ∅50, ∅63, ∅80, ∅100



### How to Order

**25A-C D A2 L 50-100 Z-M9BW**

Series compatible with secondary batteries

With auto switch

Nil	Without magnet for switch*1
D	With auto switch (Built-in magnet)

\*1 In the case of without magnet for switch, auto switch cannot be mounted.

Mounting

B	Basic
L	Axial foot
F	Rod flange
G	Head flange
C	Single clevis
D	Double clevis
T	Center trunnion

Bore size

40	40 mm
50	50 mm
63	63 mm
80	80 mm
100	100 mm

Number of auto switches

Nil	2
S	1
3	3
n	n

Auto switch

Nil	Without auto switch
-----	---------------------

\* Refer to page 205 for the applicable auto switch model.

Cylinder stroke [mm]

40	25, 50, 75, 100, 125, 150, 175, 200, 250, 300, 350, 400, 450, 500
50, 63	25, 50, 75, 100, 125, 150, 175, 200, 250, 300, 350, 400, 500, 600
80, 100	25, 50, 75, 100, 125, 150, 175, 200, 250, 300, 350, 400, 450, 500, 600, 700

\* Intermediate strokes not listed above are produced upon receipt of order.

### Built-in Magnet Cylinder Model

If a built-in magnet cylinder without an auto switch is required, there is no need to enter the symbol for the auto switch (Example) 25A-CDA2L40-100Z

\* The 25A- series specifications and dimensions are the same as those of the standard model.

[Click here for details.](#)

### Mounting Bracket Part Nos. for the 25A- Series

Bore size [mm]	40	50	63	80	100
Axial foot*1	25A-CA2-L04	25A-CA2-L05	25A-CA2-L06	25A-CA2-L08	25A-CA2-L10
Flange	25A-CA2-F04	25A-CA2-F05	25A-CA2-F06	25A-CA2-F08	25A-CA2-F10
Single clevis	25A-CA2-C04	25A-CA2-C05	25A-CA2-C06	25A-CA2-C08	25A-CA2-C10
Double clevis*2	25A-CA2-D04	25A-CA2-D05	25A-CA2-D06	25A-CA2-D08	25A-CA2-D10

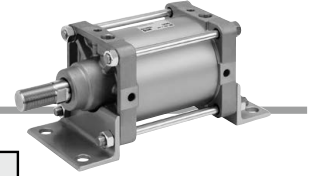
\*1 When axial foot brackets are used, two pieces should be ordered for each cylinder.

\*2 A clevis pin, flat washers and split pins are shipped together with double clevis.

# Air Cylinder: Standard Type Double Acting, Single Rod

## 25A-CS2 Series

ø125, ø140, ø160



### How to Order

**25A - C D S2 L 125 - 300 - M9BW**

Series compatible with secondary batteries

With auto switch

Nil	Without magnet for switch*1
D	With auto switch (Built-in magnet)

\*1 In the case of without magnet for switch, auto switch cannot be mounted.

Mounting

B	Basic
L	Foot
F	Rod flange
G	Head flange
C	Single clevis
D	Double clevis
T	Center trunnion

Bore size

125	125 mm
140	140 mm
160	160 mm

Port thread type

Nil	Rc
TN	NPT
TF	G

Number of auto switches

Nil	2
3	3
S	1
n	n

Auto switch

Nil	Without auto switch
-----	---------------------

\* Refer to page 205 for the applicable auto switch model.

Cylinder stroke [mm]

Mounting bracket	Maximum stroke	
	Basic, Head flange, Single clevis, Double clevis, Center trunnion	Foot, Rod flange
Bore size		
125	1000 or less	1600 or less
140		
160	1200 or less	

### Built-in Magnet Cylinder Model

If a built-in magnet cylinder without auto switch is required, there is no need to enter the symbol for auto switch.

(Example) 25A-CS2B125-100

\* The 25A- series specifications and dimensions are the same as those of the standard model.

[Click here for details.](#)

### Mounting Bracket Part Nos. for the 25A- Series

Bore size [mm]	125	140	160
Axial foot*1	CS2-L12	CS2-L14	CS2-L16
Flange	CS2-F12	CS2-F14	CS2-F16
Single clevis	CS2-C12	CS2-C14	CS2-C16
Double clevis*2	25A-CS2-D12	25A-CS2-D14	25A-CS2-D16

\*1 Order two foot brackets per cylinder.

\*2 A clevis pin and split pins are shipped together with double clevis.

Directional Control Valves

Air Cylinders

Related Products

Rotary Actuators

Air Grippers

Vacuum Equipment

Air Preparation Equipment

Clean Air Filters

Modular F.R.L./Pressure Control Equipment

Fittings/Flow Control Equipment

Detection Switches

Fluid Control Equipment

Electric Actuators

Auto Switches