

Made to Order Common Specifications: -XB22: Shock Absorber Soft Type RJ Series Type



13 Shock Absorber Soft Type RJ Series Type

- The standard cylinder has been equipped with shock absorber soft type RJ series type to enable soft stopping at the stroke end.
- Two different shock absorbers are available in accordance with the operating conditions.

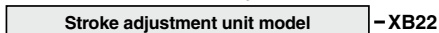
Applicable Series

Series	Description	Model	Bearing type	Applicable bore size	Vol. no. (for std model)
MY	Mechanically jointed rodless cylinder	MY1B-Z	Basic type	ø25, ø32, ø40	②-1 From P. 1188
		MY1H-Z	Single-axis linear guide type	ø25, ø32, ø40	
		MY1B	Basic type	ø10, ø20	
		MY1M	Slide bearing type	ø16 to ø40	
		MY1C	Cam follower type	ø16 to ø40	
		MY1H	Single-axis linear guide type	ø10, ø16, ø20	
		MY1□W	With protective cover	ø16 to ø40	
		MY2C	Cam follower type	ø16, ø25, ø40	
		MY2H	Single-axis linear guide type	ø16, ø25, ø40	
		MY2HT	Double-axis linear guide type	ø16, ø25	
		MY3B	Basic type	ø16 to ø50	
		MY3M	Slide bearing type	ø16, ø25, ø40	
CY	Magnetically coupled rodless cylinder	CY1L	Ball bushing bearing type	ø6 to ø25	②-1 From P. 1516
		CY1H	Single-axis linear guide type	ø10 to ø25	
		CY1HT	Double-axis linear guide type	ø25	
MGP	Compact guide cylinder	MGP-Z	Slide bearing type, Ball bushing bearing type	ø12 to ø40	②-2 From P. 432
MGG	Guide cylinder	MGG	Slide bearing type, Ball bushing bearing type	ø20 to ø32	②-2 From P. 538
CX2	Slide unit	CX2N	Slide bearing type	ø10, ø15, ø25	②-2 From P. 650
CXT	Platform cylinder	CXT	Slide bearing type, Ball bushing bearing type	ø12 to ø25	②-2 From P. 712

How to Order



How to Order a Stroke Adjustment Unit for MY Itself



Specifications

Absorbed energy	For the maximum impact weight graph, refer to page 1754.
Specifications other than above and external dimensions	Same as standard type

* For dimensions of the MGP series, refer to page 1754-1.

- * For details on shock absorber soft type RJ series, refer to Best Pneumatics No.2-3.
- * The shock absorber service life is different from that of each cylinder. Refer to the “Specific Product Precautions” of the RJ series for the replacement period.

Cylinders

Note) Refer to Best Pneumatics No. 2-3 for the details of the shock absorber RB series.

Mechanically Jointed Rodless Cylinder

Model	Type	Stroke adjusting unit	Bore size						
			ø10	ø16	ø20	ø25	ø32	ø40	ø50
MY1B-Z MY1H-Z	-XB22	L	/	/	/	RJ1007H	RJ1412H		/
		H				RJ1412H	—	—	
		Standard				RB1007	RB1412		
MY1B	-XB22	L	/	/	RJ0806H	/	/	/	/
		H			RJ1007H				
		Standard			L				
MY1M MY1C	-XB22	L	/	RJ0806H	RJ1007H	RJ1412H		/	
		H		RJ1007H	RJ1412H	—	—		
		Standard		L	RB0806	RB1007	RB1412		
MY1H	-XB22	L	/	RJ0806H	RJ1007H	/	/	/	/
		H		RJ1007H					
		Standard		L	RB0806				
MY1□W	-XB22	L	/	RJ0806H	RJ1007H	RJ1412H		/	
		H		RJ1007H	RJ1412H	—	—		
		Standard		L	RB0806	RB1007	RB1412		
MY2C MY2H	-XB22	L	/	RJ0806H	RJ1007H	/	/	RJ1412H	/
		H		RJ1007H Note)	RJ1412H			—	
		Standard		L	RB0806			RB1007	
MY2HT	-XB22	L	/	RJ1007H	RJ1412H	/	/	—	/
		H		RJ1412H	—				
		Standard		L	RB1007			RB1412	
MY3B	-XB22	L	/	RJ0806H	RJ1007H	RJ1412H		/	
		H		RJ1007H	RJ1412H	—	—		
		Standard		L	RB0806	RB1007	RB1412		
MY3M	-XB22	L	/	RJ0806H	RJ1007H	/	/	RJ1412H	/
		H		RJ1007H	RJ1412H				
		Standard		L	RB0806			RB1007	
	-XB22	L	/	RJ0806H	RJ1007H	/	/	RB2015	/
		H		RJ1007H	RB2015				
		Standard		L	RB1007			RB1412	

Note) MY2C16 is not available with H unit.

Magnetically Coupled Rodless Cylinder

Model	Type	Bore size				
		ø6	ø10	ø15	ø20	ø25
CY1L	-XB22	RJ0805	RJ0806H		RJ1007H	RJ1412H
	Standard	RB0805		RB1006	RB1411	
CY1H	-XB22	RJ0806H		RJ1007H	RJ1412H	
	Standard	RB0805	RB0806	RB1006	RB1411	
CY1HT	-XB22	/		RJ1412H		
	Standard	/		RB1411		

Guide Cylinder

Model	Type	Bore size					
		ø12	ø16	ø20	ø25	ø32	ø40
MGP-Z	-XB22	RJ0806H		RJ1007H		RJ1412H	
	-XC69	RB0806		RB1007		RB1412	
MGG	-XB22	/		RJ1007H	RJ1412H		—
	Standard	/		RB1007	RB1412		RB2015

Platform Cylinder

Model	Type	Bore size			
		ø12	ø16	ø20	ø25
CXT	-XB22	RJ0806H		RJ1007H	RJ1412H
	Standard	RB0806		RB1007	RB1411

Slide Unit/Double Rod Type

Model	Type	Bore size		
		ø10	ø15	ø25
CX2N	-XB22	RJ0806H		RJ1007H
	Standard	RB0805		RB1006



Made to Order Common Specifications: -XB22: Shock Absorber Soft Type RJ Series Type



13 Shock Absorber Soft Type RJ Series Type

Symbol
-XB22

Maximum Impact Weight Graph (Shock Absorber Performance Line Graph) * Values in the maximum impact mass graph are at room temperature (20 to 25°C).

Ensure that the impact mass and the impact speed are within the absorbed energy graphs below.

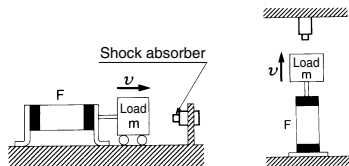
Refer to each cylinder selection calculation for load factors and guide load factors.

Please consult with SMC for the MY3 series since there are restrictions on collision speed resulting from the cylinder.

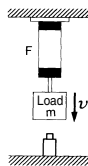
■ Type of collision

Horizontally-applied impact

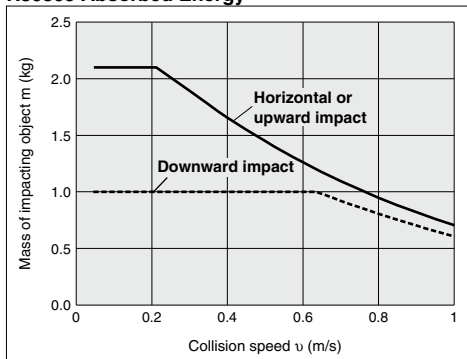
Air cylinder impact (horizontal/upward)



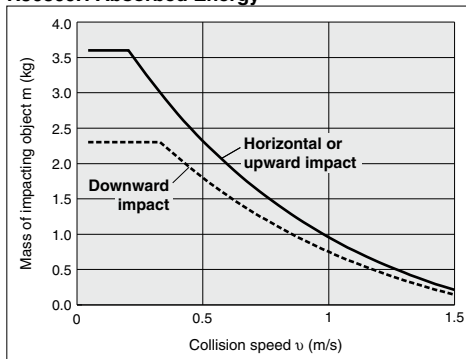
Air cylinder impact (downward)



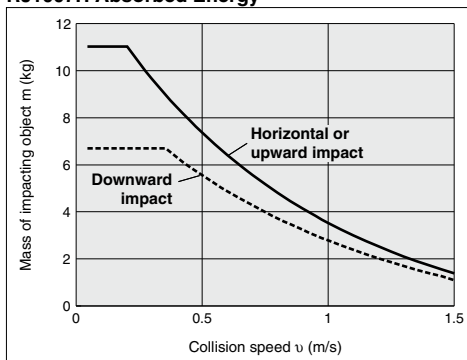
RJ0805 Absorbed Energy



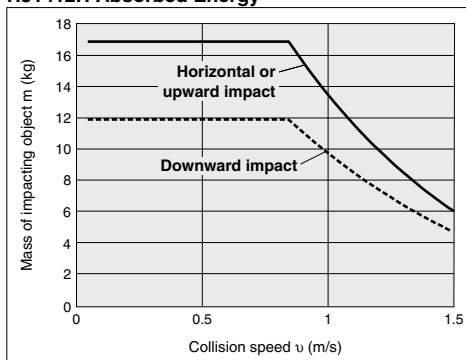
RJ0806H Absorbed Energy



RJ1007H Absorbed Energy



RJ1412H Absorbed Energy



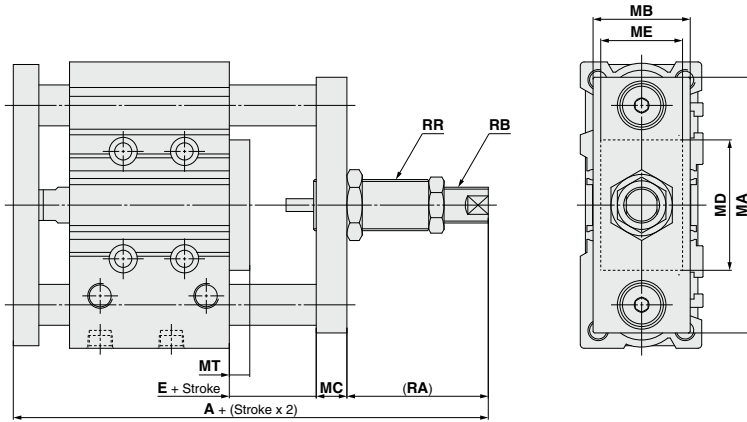
* Be sure to read "Handling Precautions for SMC Products" (M-E03-3) and "Shock Absorber Soft Type RJ Series" (Best Pneumatics No. 2-3) before using.

Made to Order Common Specifications:
Shock Absorber Soft Type RJ Series Type

13 Shock Absorber Soft Type RJ Series Type

Symbol
-XB22

Dimensions (Dimensions other than below are the same as standard type.)



(mm)

Bore size	A	E	MA	MB	MC	MD	ME	MT	RA	RB	RR
12	90	7	51	19	8	27	13	6	33	RJ0806H	M12 x 1.5
16	94	7	58	19	8	28	16	6	33	RJ0806H	M12 x 1.5
20	109	9	68	30	10	33	22	8	37	RJ1007H	M14 x 1.5
25	109.5	9	82	30	10	41	25	8	37	RJ1007H	M14 x 1.5
32	135.5	9	100	38	12	51	32	8	55	RJ1412H	M20 x 1.5
40	142	9	108	38	12	60	32	8	55	RJ1412H	M20 x 1.5